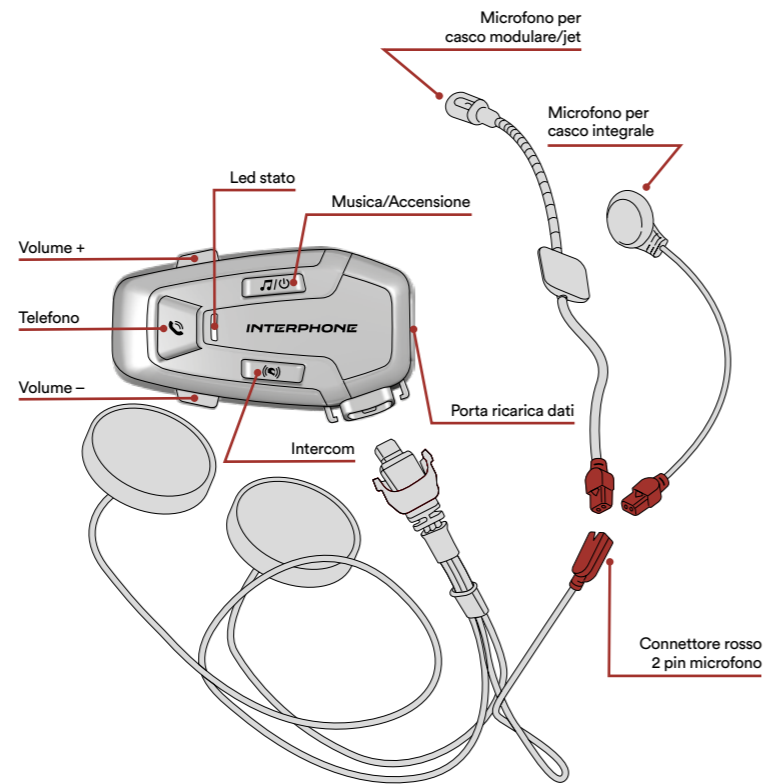


Panoramica del sistema

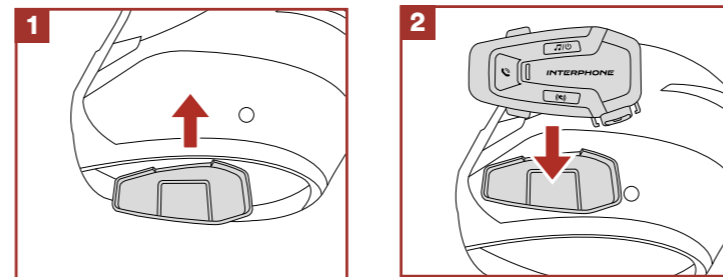


VERIFICARE LA PRESENZA DI
AGGIORNAMENTI SOFTWARE SUL SITO
www.interphone.com

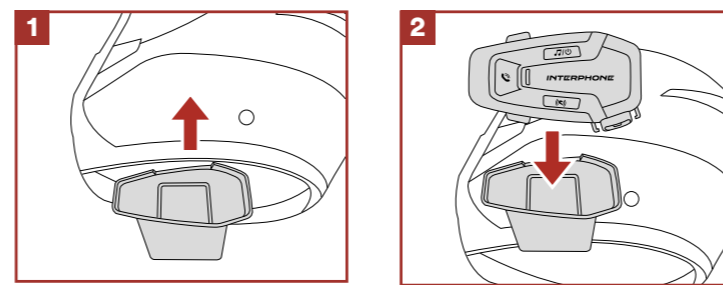
Cellularline S.p.A.
Via Lambrakis 1/A, 42122 Reggio Emilia, Italy
www.cellularline.com

Installazione

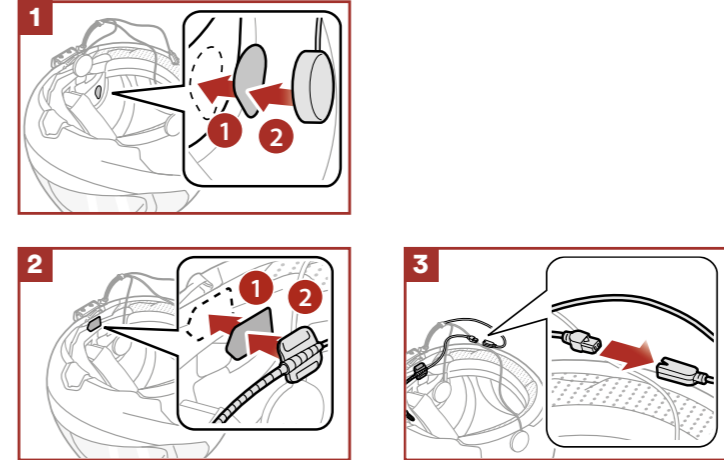
Utilizzo/applicazione con bi-adesivo nel supporto



Utilizzo/applicazione con staffa a clip dell'unità principale



Installazione degli auricolari e del microfono



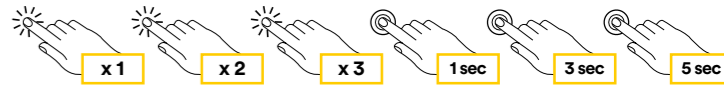
U-COM 7A

Guida rapida

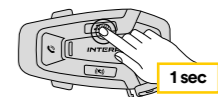


Legenda e funzioni base

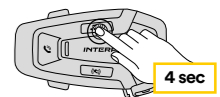
| | | | | | |
|-------------------|-------------------------------|-------------------------------|------------------------|-------------------------|----------------------------|
| Premere una volta | Premere due volte rapidamente | Premere tre volte rapidamente | Premere per un secondo | Premere per tre secondi | Premere per cinque secondi |
|-------------------|-------------------------------|-------------------------------|------------------------|-------------------------|----------------------------|



Accensione



Spegnimento



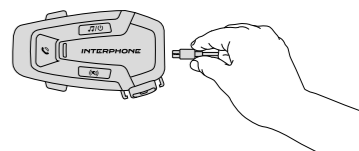
Alzare il volume



Abbassare il volume

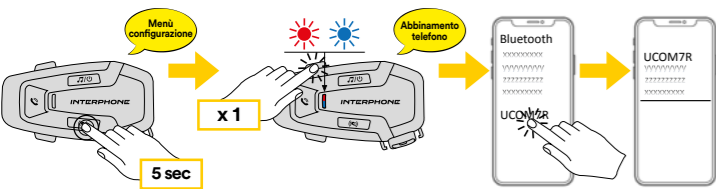


Ricarica



Abbinamento dispositivi Bluetooth®

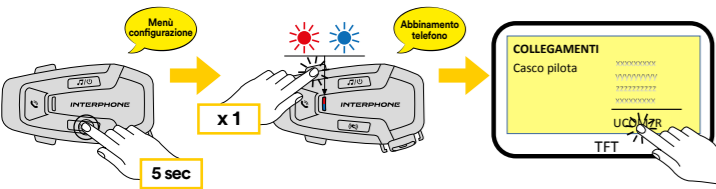
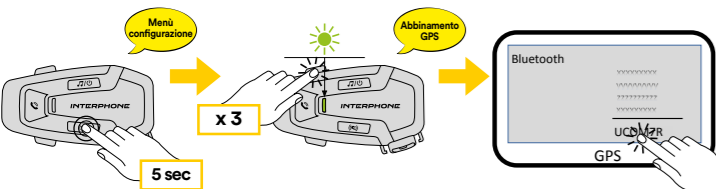
Abbinamento telefono principale (da eseguire a centralina accesa)



Abbinamento secondo telefono (da eseguire a centralina accesa)



Abbinamento GPS - TFT (da eseguire a centralina accesa)



Telefono

Rispondere alla chiamata Terminare la telefonata Rifiutare la telefonata



Assistente vocale Speed dial



Musica

Musica play Musica pausa

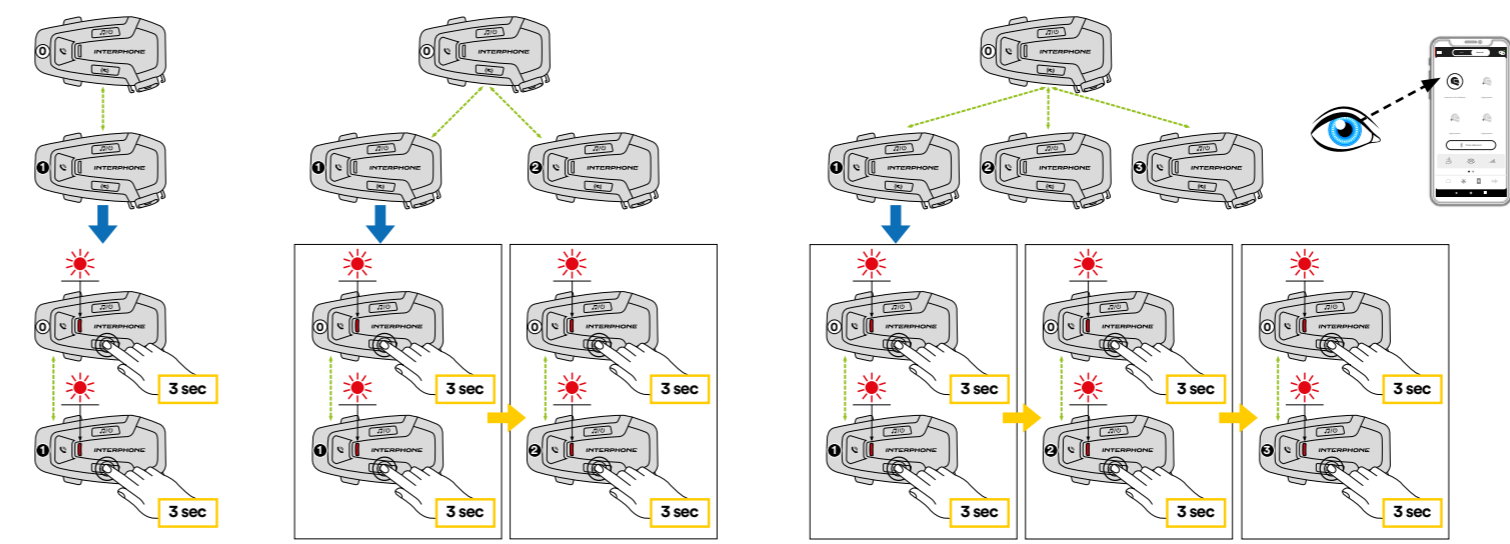


Traccia avanti Traccia indietro



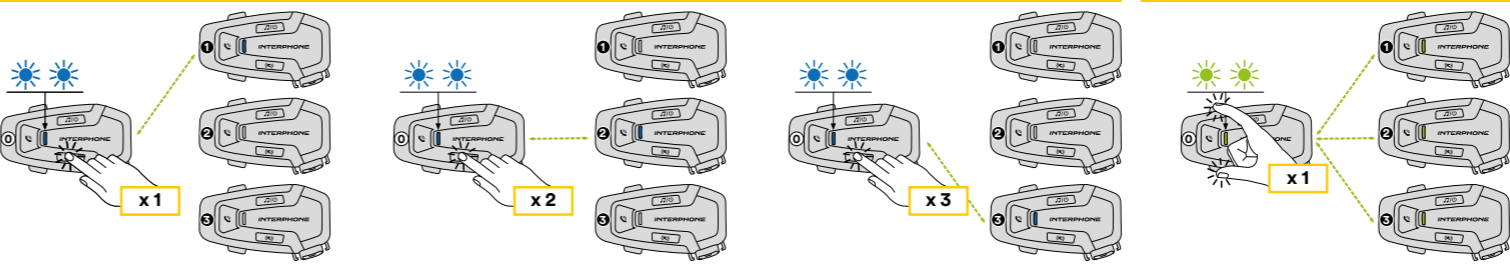
Bluetooth® Intercom - abbinamento

Abbinamento intercom a 2 Abbinamento intercom a 3 Abbinamento intercom a 4



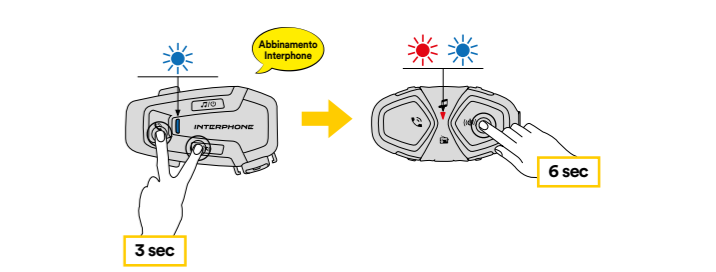
Bluetooth® Intercom - conferenza

Conferenza Intercom Conferenza Intercom di gruppo

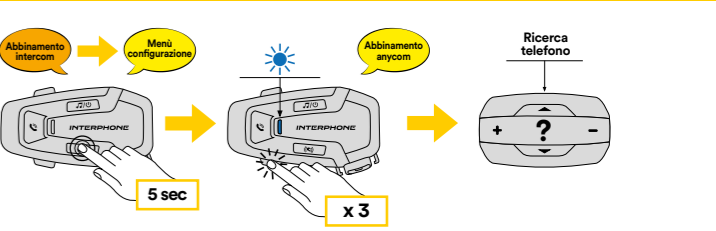


Bluetooth® Intercom - altri abbinamenti

Abbinamento serie precedenti (da eseguire a centralina spenta)



Abbinamento Anycom altre marche (eccetto Sena)



Configurazione

